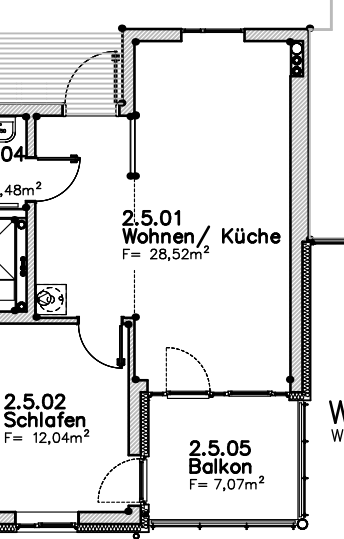
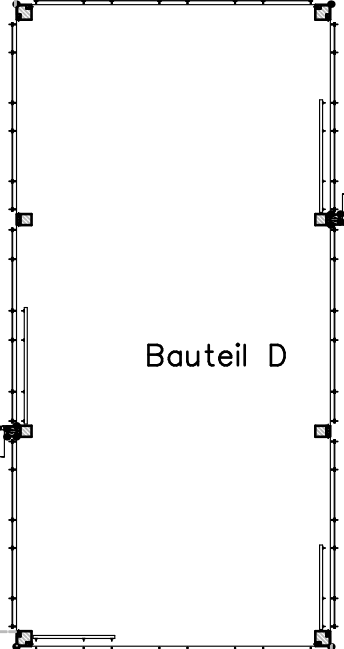
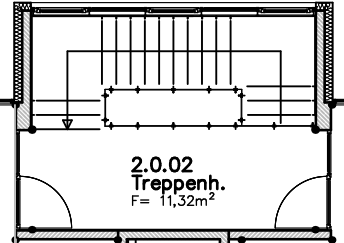
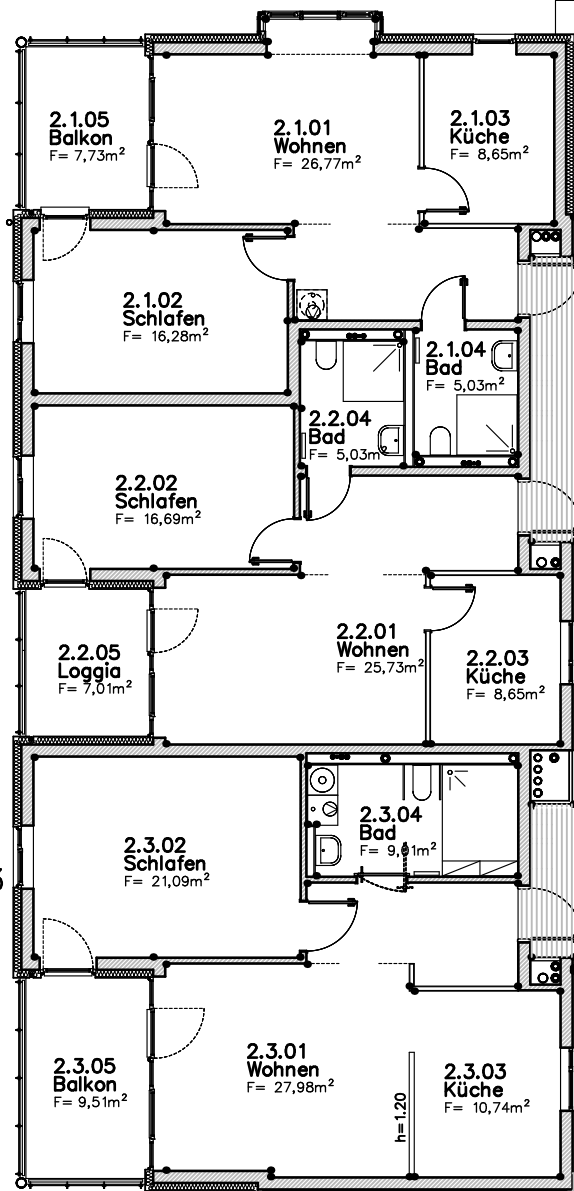


Bauteil A

WHG 2.1
WF=60.60 m²

WHG 2.2
WF=59.61 m²

WHG 2.3
WF=73.58 m²

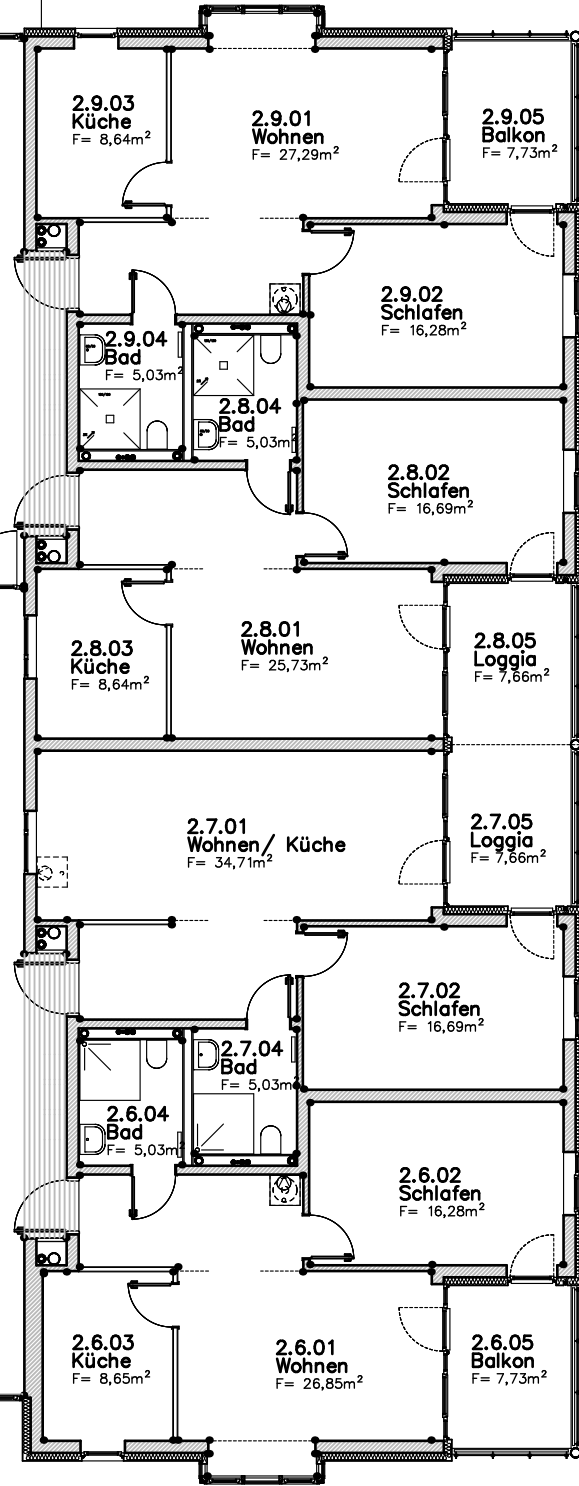


WHG 2.9
WF=61.11 m²

WHG 2.8
WF=59.92 m²

WHG 2.7
WF=60.26 m²

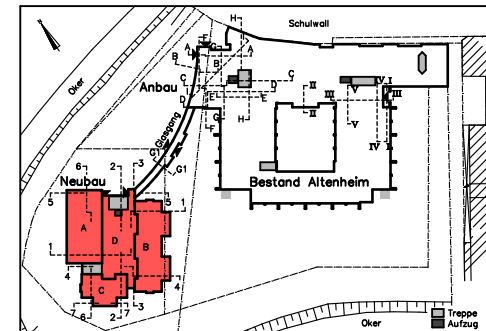
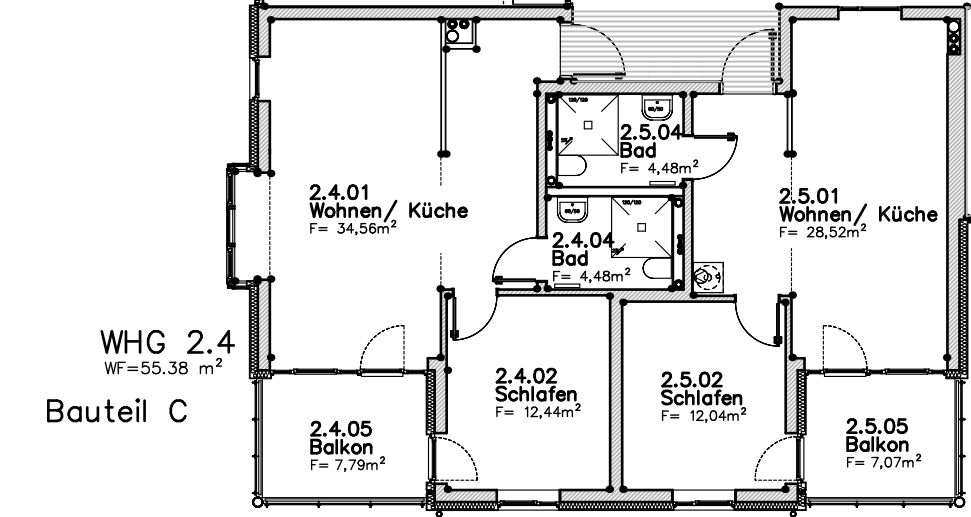
WHG 2.6
WF=60.68 m²



WHG 2.4
WF=55.38 m²

Bauteil C

WHG 2.5
WF=48.58 m²



PLANUNGSBURO FÜR ÖKOLOGISCHES BAUEN
BERND GRIGULL DIPL.-ING. ARCHITEKT
LINNSTR.2 38106 BRAUNSCHWEIG 0531/344064

PROJEKT: BETREUTES WOHNEN IN WF
WOHN- UND PFLEGEZENTRUM
AMALIE-SIEVEKING HAUS

BAUHERR: DIAKONISCHES WERK
KLOSTERGANG 66
38104 BRAUNSCHWEIG

STAND: AKTUELLER BESTAND

OBERGESCHOSS 2 – NEUBAU

MASZSTAB DATUM GEZ FORMAT ZEICHN.NR.
1:150 27.09.2011 SM A3 BN 1.2